

West Bellevue MARKET UPDATE

April Solds 2011



Apple Valley
Bed/Bath: 3/1
Square Feet: 1,210
Asking Price: \$450,000
Sale Price: \$450,000



Surrey Downs
Bed/Bath: 4/2.25
Square Feet: 2,220
Asking Price: \$430,000
Sale Price: \$491,000



West Bellevue
Bed/Bath: 4/1.75
Square Feet: 2,170
Asking Price: \$499,890
Sale Price: \$510,000



West Bellevue
Bed/Bath: 4/1.75
Square Feet: 2,170
Asking Price: \$529,950
Sale Price: \$529,950



West Bellevue
Bed/Bath: 3/2
Square Feet: 1,830
Asking Price: \$450,000
Sale Price: \$536,000



Surrey Downs
Bed/Bath: 3/1.75
Square Feet: 1,500
Asking Price: \$625,000
Sale Price: \$620,000



Yarrow Point
Bed/Bath: 4/3.5
Square Feet: 2,460
Asking Price: \$699,000
Sale Price: \$630,000



West Bellevue
Bed/Bath: 4/2.5
Square Feet: 2,172
Asking Price: \$699,995
Sale Price: \$680,000



Clyde Hill
Bed/Bath: 2/1.75
Square Feet: 1,510
Asking Price: \$739,000
Sale Price: \$695,000



Medina
Bed/Bath: 3/2.5
Square Feet: 2,400
Asking Price: \$749,000
Sale Price: \$725,000



Medina
Bed/Bath: 3/1
Square Feet: 1,840
Asking Price: \$849,000
Sale Price: \$799,500



Medina
Bed/Bath: 4/2.5
Square Feet: 3,025
Asking Price: \$875,000
Sale Price: \$840,088



Enatai
Bed/Bath: 4/3.75
Square Feet: 2,940
Asking Price: \$899,950
Sale Price: \$868,500



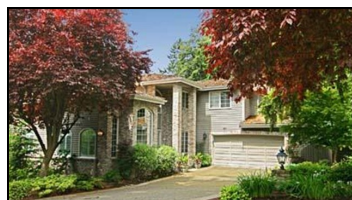
Enatai
Bed/Bath: 5/3
Square Feet: 3,866
Asking Price: \$900,000
Sale Price: \$875,000



Yarrow Point
Bed/Bath: 4/2.5
Square Feet: 3,533
Asking Price: \$1,099,000
Sale Price: \$950,000



Enatai
Bed/Bath: 4/3.75
Square Feet: 3,457
Asking Price: \$1,095,000
Sale Price: \$995,000



Enatai
Bed/Bath: 5/3.5
Square Feet: 4,280
Asking Price: \$1,175,000
Sale Price: \$1,025,000



Medina
Bed/Bath: 4/2.25
Square Feet: 2,030
Asking Price: \$1,050,000
Sale Price: \$1,042,500



Medina
Bed/Bath: 5/3
Square Feet: 3,280
Asking Price: \$1,200,000
Sale Price: \$1,050,000



Clyde Hill
Bed/Bath: 3/3.5
Square Feet: 3,613
Asking Price: \$1,500,000
Sale Price: \$1,400,000



Clyde Hill
Bed/Bath: 4/2
Square Feet: 4,009
Asking Price: \$1,600,000
Sale Price: \$1,475,000



Clyde Hill
Bed/Bath: 4/3.5
Square Feet: 4,280
Asking Price: \$1,595,000
Sale Price: \$1,520,000



Medina
Bed/Bath: 4/2.75
Square Feet: 2,968
Asking Price: \$1,550,000
Sale Price: \$1,600,000



Clyde Hill
Bed/Bath: 4/3.5
Square Feet: 4,720
Asking Price: \$1,778,000
Sale Price: \$1,665,000



Lochleven
Bed/Bath: 4/3.5
Square Feet: 5,100
Asking Price: \$2,100,000
Sale Price: \$1,800,000



Clyde Hill
Bed/Bath: 4/3.5
Square Feet: 4,389
Asking Price: \$2,660,000
Sale Price: \$2,100,000



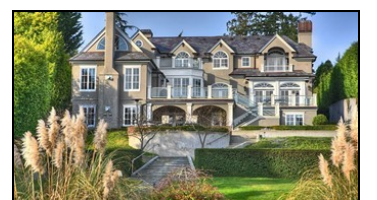
Yarrow Point
Bed/Bath: 4/3.25
Square Feet: 5,240
Asking Price: \$2,785,000
Sale Price: \$2,625,985



Medina
Bed/Bath: 5/5
Square Feet: 7,365
Asking Price: \$5,250,000
Sale Price: \$4,500,000



West Bellevue
Bed/Bath: 5/6.5
Square Feet: 7,200
Asking Price: \$7,850,000
Sale Price: \$7,030,000



Medina
Bed/Bath: 5/5.5
Square Feet: 7,560
Asking Price: \$8,800,000
Sale Price: \$7,250,000



Sheila Lawrenson ABR, CNE
Managing Broker
425-241-9400 - Cell
425-671-2274 - Fax
150 Bellevue Way SE
Bellevue, WA 98004
Sheila@lawrensonhomes.com
<http://www.lawrensonhomes.com>



Tricia Anderson
Broker
425-241-3222 - Cell
425-671-2274 - Fax
150 Bellevue Way SE
Bellevue, WA 98004
triciaanderson@cbbain.com
<http://www.triciaanderson.net>

