

# Season's Greetings

## WEST BELLEVUE MARKET UPDATE

### November Solds 2010



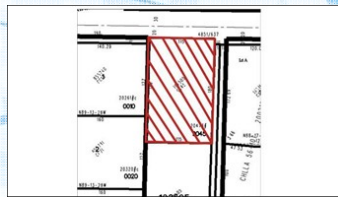
**Enatai**  
Bed/Bath: 3/2  
Square Feet: 1,240  
Asking Price: \$425,000  
Sale Price: \$420,000



**Apple Valley**  
Bed/Bath: 4/1  
Square Feet: 1,300  
Asking Price: \$474,000  
Sale Price: \$448,000



**Downtown**  
Bed/Bath: 3/1.75  
Square Feet: 1,622  
Asking Price: \$529,950  
Sale Price: \$498,000



**Clyde Hill**  
Bed/Bath: 2/1  
Square Feet: 1,200  
Asking Price: \$645,000  
Sale Price: \$520,000



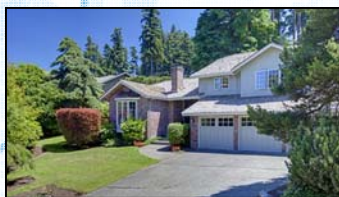
**West Bellevue**  
Bed/Bath: 4/2.25  
Square Feet: 1,140  
Asking Price: \$549,950  
Sale Price: \$530,000



**West Bellevue**  
Bed/Bath: 4/3  
Square Feet: 2,860  
Asking Price: \$799,000  
Sale Price: \$730,000



**Downtown**  
Bed/Bath: 4/2.5  
Square Feet: 3,077  
Asking Price: \$989,800  
Sale Price: \$950,000



**Clyde Hill**  
Bed/Bath: 4/3.25  
Square Feet: 2,970  
Asking Price: \$999,000  
Sale Price: \$966,000



**Medina**  
Bed/Bath: 4/3.25  
Square Feet: 2,770  
Asking Price: \$969,000  
Sale Price: \$999,894



**Clyde Hill**  
Bed/Bath: 4/3/25  
Square Feet: 4,200  
Asking Price: \$1,295,000  
Sale Price: \$1,070,000



**Medina**  
Bed/Bath: 4/3.5  
Square Feet: 3,510  
Asking Price: \$1,383,900  
Sale Price: \$1,200,000



**West Bellevue**  
Bed/Bath: 4/3.5  
Square Feet: 3,880  
Asking Price: \$1,248,000  
Sale Price: \$1,200,000



**Clyde Hill**  
Bed/Bath: 4/3  
Square Feet: 3,058  
Asking Price: \$1,395,000  
Sale Price: \$1,300,000



**Yarrow Point**  
Bed/Bath: 5/3.5  
Square Feet: 4,560  
Asking Price: \$1,395,000  
Sale Price: \$1,330,000



**Clyde Hill**  
Bed/Bath: 2/1  
Square Feet: 1,770  
Asking Price: \$1,189,000  
Sale Price: \$1,350,000



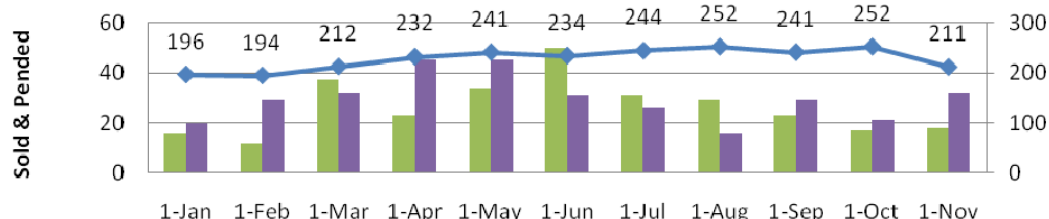
**Clyde Hill**  
Bed/Bath: 6/5.5  
Square Feet: 6,706  
Asking Price: \$2,789,000  
Sale Price: \$2,515,000



**Medina**  
Bed/Bath: 0/0  
Square Feet: 0  
Asking Price: \$3,500,000  
Sale Price: \$3,350,000

\*Graph is based on data supplied by the NWMLS. NWMLS does not guarantee or is not in any way responsible for it's accuracy. Data maintained by NWMLS may not reflect all real estate activity in the market.

### West Bellevue Sold, Pended and For Sale 2010



	10-Jan	10-Feb	10-Mar	10-Apr	10-May	10-Jun	10-Jul	10-Aug	10-Sep	10-Oct	10-Nov
Sold	16	12	37	23	34	50	31	29	23	17	18
Pended	20	29	32	45	45	31	26	16	29	21	32
For Sale	196	194	212	232	241	234	244	252	241	252	211

### Market Update:

Thanksgiving is behind us and the December holidays are fast approaching. In many of our local markets, 'demand' for homes is increasing substantially. Without a doubt, substantial drops in the number of listings have helped fuel the improvement, and IS typical for this time of year. Eastside inventory is down 17% since Halloween. New pending sales are also responsible for the increased demand we see in West Bellevue. The Eastside led the increase by adding 10% more pending sales since Oct. 31<sup>st</sup>.

### Buying or Selling a Home:

It is our pleasure to put our 31 years of combined experience to work for you, to maximize your objectives in buying or selling a home, and to simplify and expedite the process. Most of all, we will exceed your expectations of what a Real Estate Broker does. First and foremost, it's *all about you*—your home, your dreams and your new beginnings. Please give us a call. We would love the opportunity to help you reach your personal real estate goals.

*Happy Holidays and all our best to you and yours in 2011!*



**Sheila Lawrenson** ABR, CNE  
Managing Broker  
425-241-9400 - Cell  
425-671-2274 - Fax  
150 Bellevue Way SE  
Bellevue, WA 98004  
Sheila@lawrensonhomes.com  
<http://www.lawrensonhomes.com>



**Tricia Anderson**

Broker  
425-241-3222 - Cell  
425-671-2274 - Fax  
150 Bellevue Way SE  
Bellevue, WA 98004  
triciaanderson@cbbain.com  
<http://www.triciaanderson.net>

